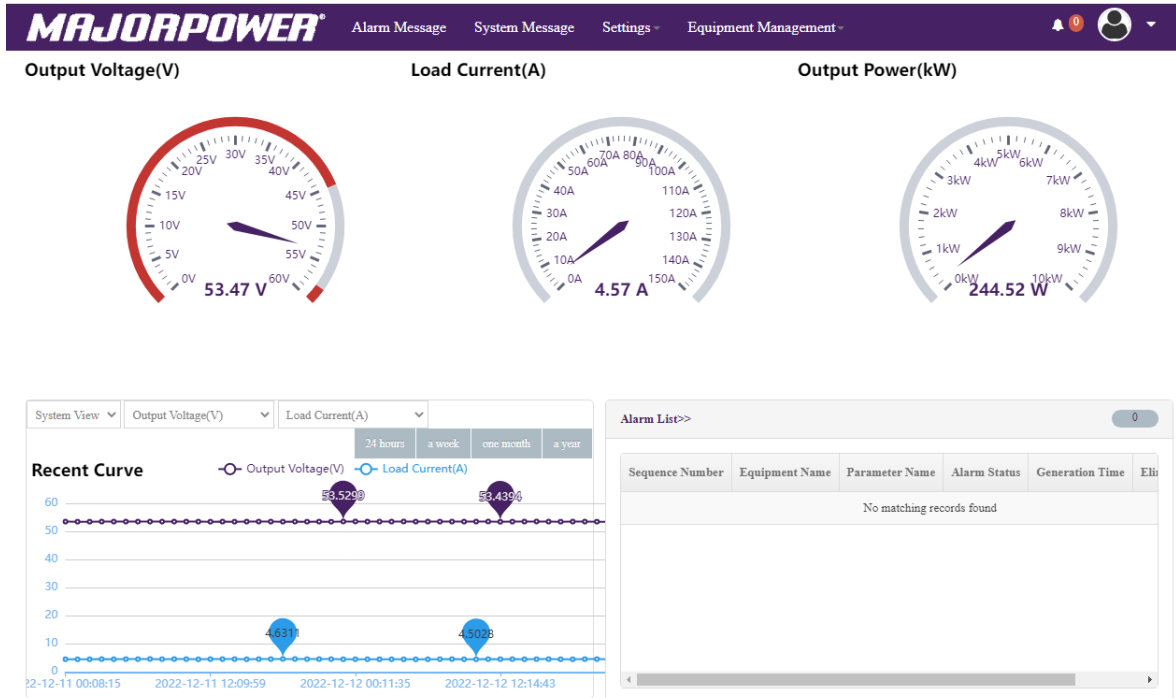




# Majortel Controller

The Controller for Majortel Power Conversion Systems



## MTS-Com Integrated Monitor; Alarm Control Module; Secured Access

The interface development project was initiated in response to user input and requests for flexible features. This new series controller module is built for an exceptional user experience in a secured industrial network environment.

In the forefront of key-stakeholder request stood the Enhanced Secure Access to a variety of private network applications.

Selections - REDIS; TACACS+; RADIUS; SNMPv3 and eMail.

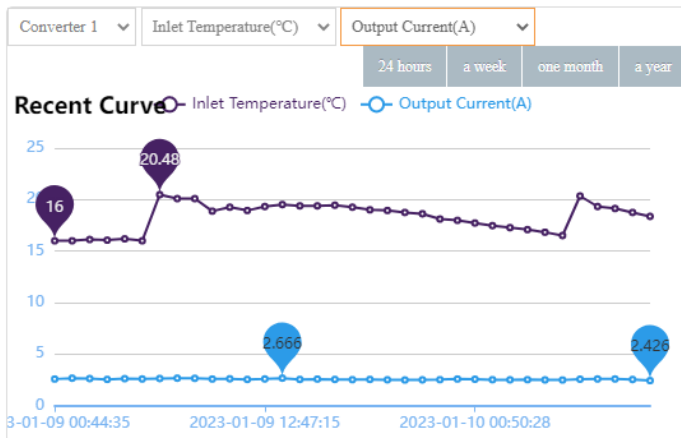
The professional user can select the protocol needed per network configuration.

Product Order SKU: MTS-COM-V22A

# Navigation: M+M Interface

The screenshot displays the MAJORPOWER M+M Interface. The top navigation bar includes links for Home Page, Settings, Network Settings, IP Address, VPN Configuration, WEB Port, Network Service, REDIS Configuration, TACACS+/RADIUS Configuration (selected), SNMP Configuration, and Email Configuration. The main content area is divided into two panels. The left panel, titled 'TACACS+/RADIUS Configuration', contains fields for Authentication type, TACACS+ server IP, TACACS+ server port, TACACS+ server encryption key, TACACS+ requested service, TACACS+ requested protocol, TACACS+ remote client's IP, TACACS+ remote user tty or port, RADIUS server IP, RADIUS server port (set to 1812), and RADIUS server encryption key. The right panel, titled 'Battery Setting', shows a table of battery parameters with columns for Sequence Number, Parameter Name, Value, Type, and Updated Time. The table lists 11 parameters, including Float Charge Voltage, Equal Charge Voltage, Battery Capacity, Charge Limit Coefficient, Auto Equal Charge Enable, Turn Equal Charge Current, Turn Equal Charge SOC, Cycle Equal Charge Enable, Equal Charge Cycle, Equal Charge Time Limit, and Temp Compensation Enable. Below the table is an 'Alarm List' section with a table showing one alarm: Sequence Number 1, Equipment Name Converter 1, Parameter Name Conv Comm Lost With Monitor, Alarm Status Produce, and Generation 2023-01-11:54.

Navigation is graphical, simple and intuitive. Multiple tabs and drop-down menus guide the user through the interface from man-to-machine.



## Performance Graphics

Display history and performance data logs in graphic form or export list for deep analysis.

## Next Level Security

Protocol availability for RADIUS, SSH, NTP, SMTP and SNMP v3.