



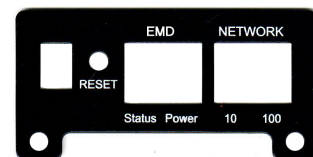
# Majorsine NMC<sub>3</sub>

The Third Generation Communications Card for Majorsine Inverters



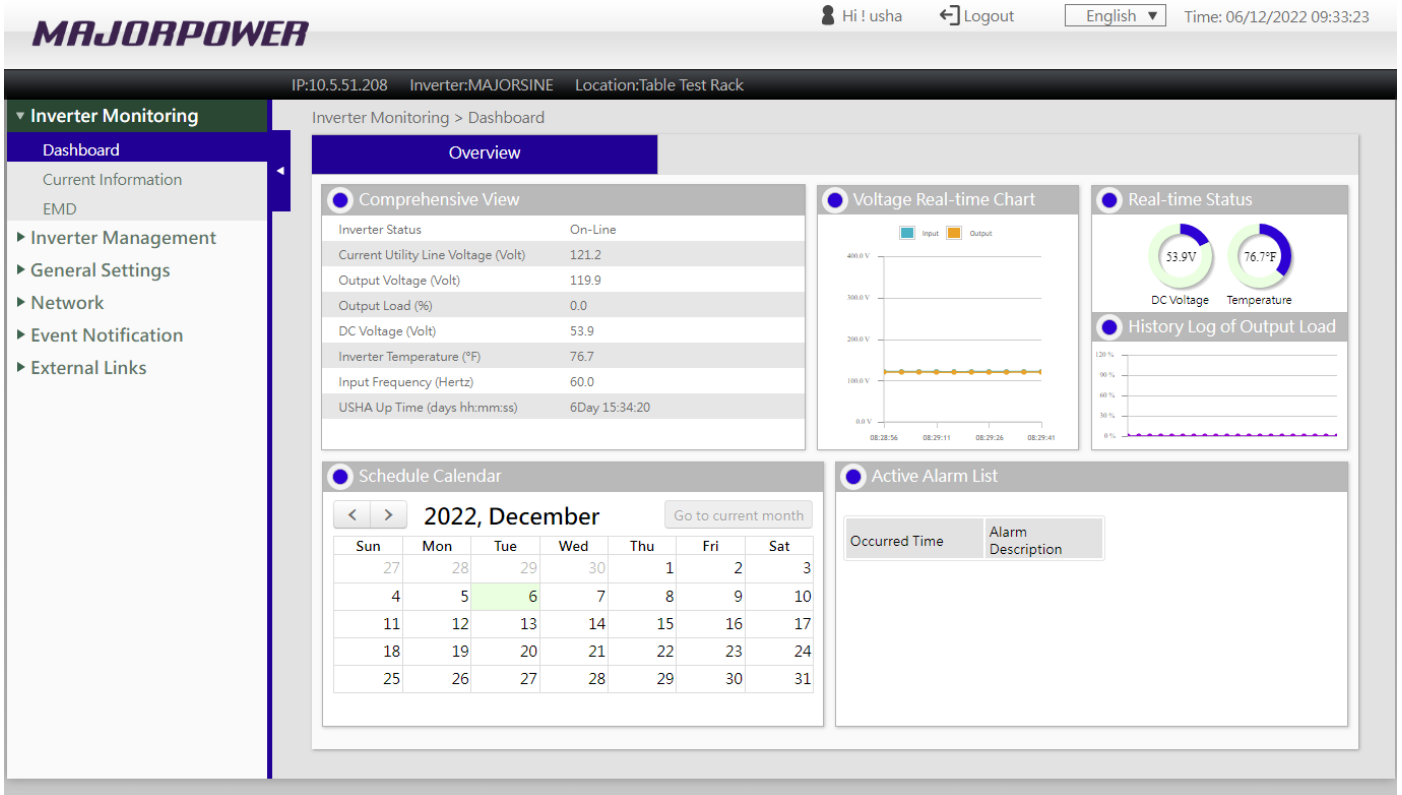
## Key Features for the Network Management Card (NMC<sub>3</sub>)

- Real-Time Inverter Health Monitoring
- Flexible Configuration Via Web Browser, NMS, Telnet and SNMP v3
- Automatic Events Notification Via E-Mail (smtp) and SNMP Trap
- Assigned IP Automatically via DHCP or BOOTP
- Scheduling Shutdown/Startup/Reboot of Inverter
- Records Inverter Parameters for Statistical Analysis and Event Diagnostics
- Standard Inverter MIB Support
- Auto-Sense A 10/100Mbps Ethernet Network Environment
- Environmental Monitoring Device Supported
- Configuration Utility Simplifies the Firmware Upgrade Process
- Supports RADIUS and NTLM V1
- IPv4 and IPv6 Dual-Stack

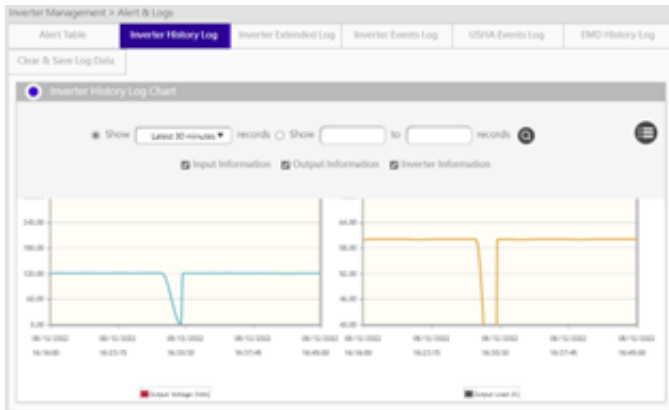


Product Order SKU: **MAJORSINE-NMC<sub>3</sub>**

# Enhanced Dashboard User Experience



In a Dashboard Current Status page, one can check the operating status, schedule, and parameters of the inverter. This page will refresh automatically with the real time operating status of the inverter, schedule, alarm and equipment information.



## Performance Graphics

Display history and performance data logs in graphic form or export list for deep analysis.

## Next Level Security

Protocol availability for RADIUS, SSH, NTP, SMTP and SNMP v3.

Monitoring remotely is a prime consideration and requirement to manage multiple network elements from a central location.

Remote access is established by simply installing the card, configuring your network IP address and plugging in the network interface cable.